



# Ridge Creek Fire

Idaho Panhandle National Forests, Coeur d'Alene River

Ranger District

Fire Information 208-953-7022

Media Information 989-292-9373

[2023.ridgecreek@firenet.gov](mailto:2023.ridgecreek@firenet.gov)

<https://inciweb.nwcg.gov/incident-information/idipf-ridge-creek>



**August 14, 2023**

---

**Location:** Approximately 3.5 miles east of the north tip of Hayden Lake, along the Hayden Creek Road (FSR 437) in the Ridge Creek drainage.

**Start Date:** 8/3/2023    **Cause:** Human/Under Investigation    **Size:** 2,553 acres    **Containment:** 13%

**Total Personnel:** 376    **Engines:** 13    **Heavy Equipment:** 6    **Crews:** 8

Weather patterns over the Ridge Creek Fire today will likely result in conditions that produce smoke that may impact communities to the southwest of the fire, including Hayden. Additional information is available at [www.airnow.gov](http://www.airnow.gov) and [www.wildlandfiresmoke.net](http://www.wildlandfiresmoke.net).

The Incident Management Team has added a Structure Protection Group. They have begun the assessment of homes in areas east of Hayden Lake and west of the Bunco Ridge area in order to develop a structure protection plan.

The Temporary Flight Restriction over the area of the Ridge Creek Fire has been extended to include a 24 hour per day restriction for civilian aircraft, which includes the use of drones.

## FIRE STATUS

An infrared flight conducted early this morning resulted in an estimate of fire size of 2,553 acres which is reflected on the enclosed maps. Containment is reduced slightly due to increased spread of the fire on the northeast side of the fire. Fire crews and heavy equipment operators continue to make progress in reinforcing and connecting containment lines. A night shift will continue throughout the week to take advantage of favorable weather conditions that may allow crews to conduct burnout operations to strengthen existing firelines. The night shift will continue to use engines to patrol and monitor fire behavior. Five helicopters will be available today to support suppression of the Ridge Creek Fire.

Hand crews and dozers will continue to work to the south along Forest Service Rd 437 (Hayden Creek Rd), east through Hells Canyon to FSR 406, and up to Hudlow Saddle. To the northeast, crews will continue to improve fireline through Sage Creek Saddle using FSR 406. Crews will begin to extend the line between FSR 406 and South Chilco Mountain. On the fire's west flank, crews are reinforcing FSR 625. From the intersection of FSR 625 and FSR 1526, crews are constructing fireline along a forested ridge to FSR 406 near Cedar Saddle. Additional containment line is also being constructed using FSR 2302 (Buckles Mountain Rd) and along Ridge Creek to FSR 437 (Hayden Creek Rd).

A community meeting was held yesterday (Sunday), at the Athol Community Center. It was live-streamed and is available to view on the Idaho Panhandle National Forests' Facebook page ([www.facebook.com/USFSIPNF/](http://www.facebook.com/USFSIPNF/)).

## WEATHER AND FIRE BEHAVIOR

Temperatures today will be in the mid to high 80s. Winds are predicted to be light and primarily from the southwest, but may vary throughout the day. Relative humidity will approach 20% during the day, with overnight recovery to 48%. Fire activity is anticipated to increase, particularly on south-facing slopes, as temperatures increase throughout the day. Be aware that weather conditions today may result in smoke that settles in lower elevations.

The outlook is for a continued trend to higher temperatures and stronger southwesterly winds. Fire activity and the visibility of smoke will increase with these trends later in the week.

## EVACUATION STATUS

The Kootenai County Office of Emergency Management has issued an alert to inform residents of the identification of **READY, SET, GO** areas in the vicinity of the Bunco Road and Hayden Lake. In this status, residents are cautioned to heighten their awareness of fire information, be familiar with evacuation procedures should it become necessary, and consistently adhere to good fire prevention measures.

The Kootenai Office of Emergency Management provides the following direction for residents in these areas designated with a **GET READY** status: "Please continue to monitor official sources and call 208-446-2292 for any questions regarding evacuations. Follow Kootenai County Emergency Management Facebook Page for updates and sign up for automated Kootenai Alert for emergency alerts. <https://www.kcsheriff.com/186/Emergency-Management>."

A map of the revised **GET READY** areas is included with this update below.

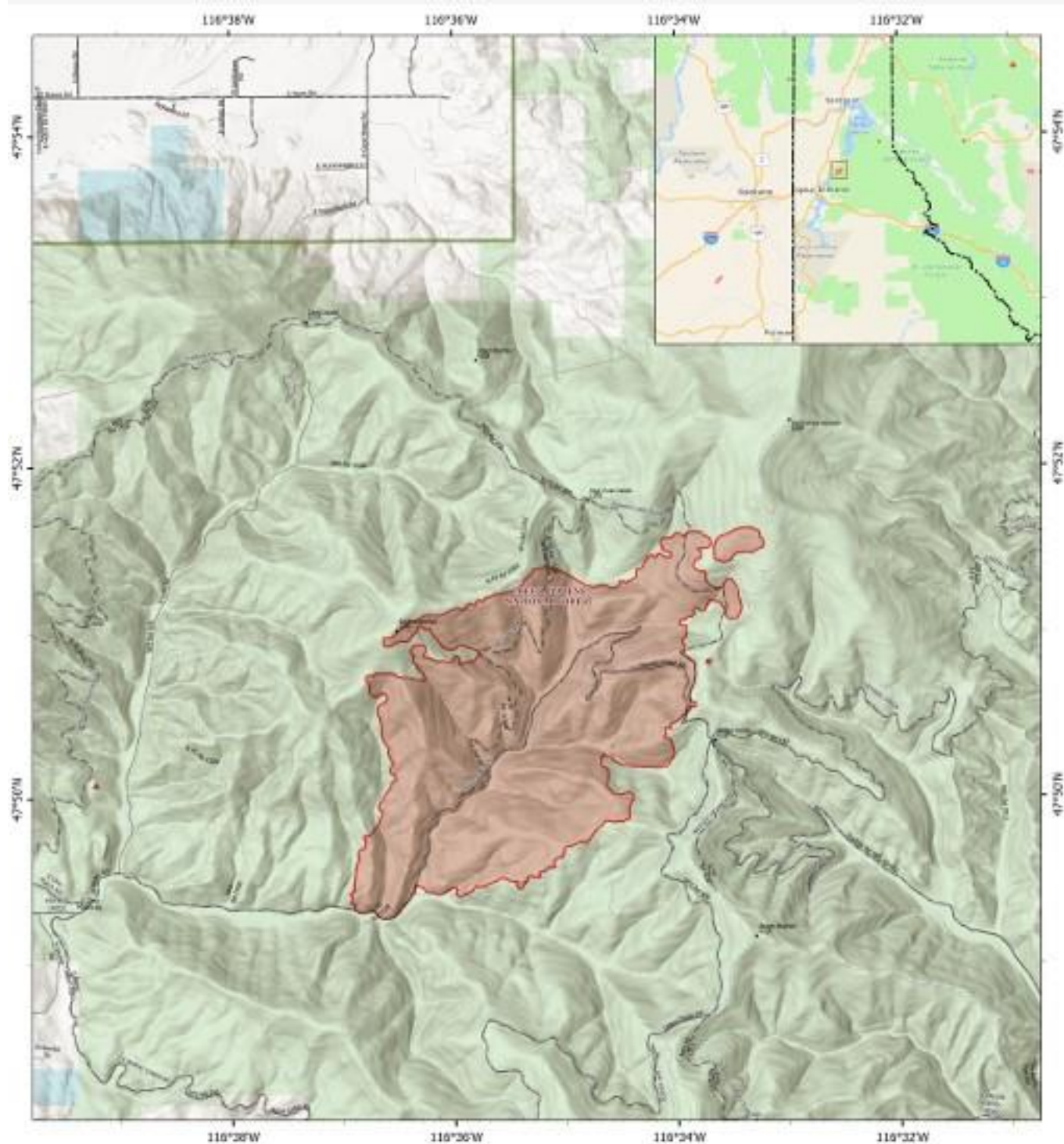
## CLOSURES AND SPECIAL MESSAGES

There is a 24-hour per day Temporary Flight Restriction (TFR) in place for the Ridge Creek Fire to prevent incursion of civilian aircraft into the area used by fire-fighting aircraft. This restriction also applies to the use of drones in the TFR area.

Firefighting aircraft are shared resources among numerous fires within the region, including the Ridge Creek Fire. These aircraft will continue to use area waterways, including Hayden Lake, for fire suppression efforts. This means that residents and recreational boaters are likely to see either helicopters or fixed-wing aircraft using the lake. For planes in particular, this requires a long, linear approach and exit from the lake. This restricts their ability to maneuver abruptly should watercraft be within their flight path, creating a serious safety hazard for both boaters and pilots. Pilots that have to deviate to avoid watercraft will also be delayed in acquiring water, inhibiting their fire suppression efforts. **All lake users should be on the lookout for approaching aircraft.** If firefighting aircraft are in the area, boaters should clear the center of the lake and move toward the shoreline.

The Coeur d'Alene Dispatch Zone has issued Stage II Fire Restrictions across the Idaho panhandle. The entirety of Kootenai County is within the Stage II Fire Restrictions area. An infographic is included with this update that details the activities that are prohibited under the restriction.

The Idaho Panhandle National Forests issued an emergency closure (Closure Order #01-04-03-23-002) effective August 4, 2023. This Order is for public and firefighter safety due to heavy fire traffic on the area impacted on the Coeur d'Alene River Ranger District, and prohibits all methods of travel (foot, mechanized, motorized and stock) on Forest Service Roads 392, 428A, 437, 1511, 1530, 1552, 1587 and Forest Service Roads 206 and 406 north of their junction, Forest Service Trails 69, 78, 234, and 802 as well as within the described area.



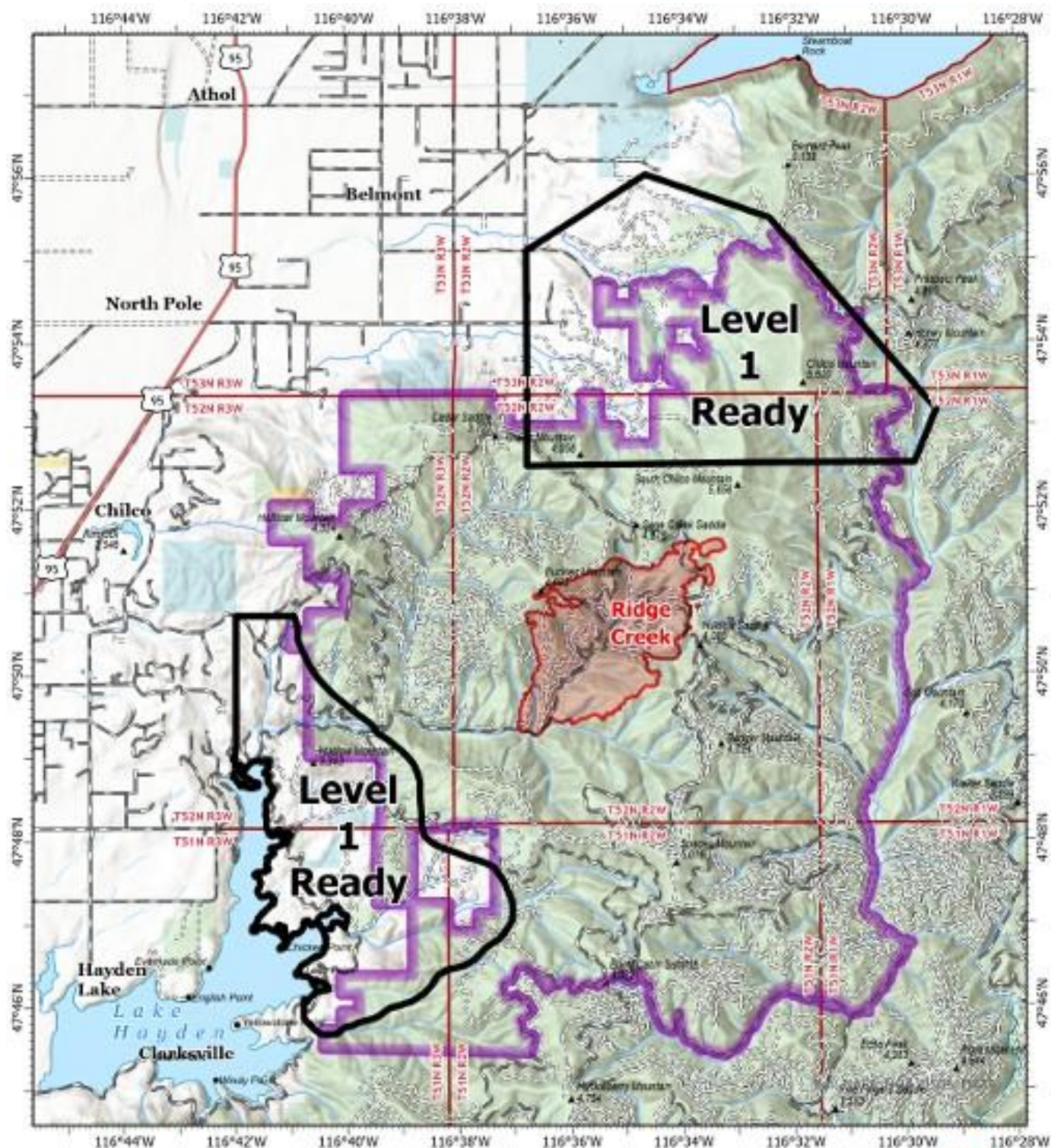
**PIO**  
**RIDGE CREEK**  
**IDIPF000447**  
 08/14/2023 Day  
 2,553 acres at 8/13/2023 @ 2130 hrs  
 Acres from: IR  
North American FUEL Center  
 FuelMap Data



- US State Boundaries
- National Forest
- Wildfire Daily Fire Perimeter
- Land Management**
  - State
  - US Forest Service (USFS)







**PIO**  
Ready, Set, Go and Closures

RIDGE CREEK  
IDIPF000447  
08/14/2023 Day

2,553 acres at 8/13/2023 @ 2139 hrs  
Acres from RT

North American 1983 Datum, Lat/Long Grid



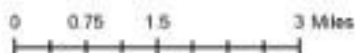
- ▬ Wildfire Daily Fire Perimeter
- ▬ Closure Areas

**Land Management**

- ▬ BLM
- ▬ State
- ▬ USFS

**Evacuation Level**

- Level 1



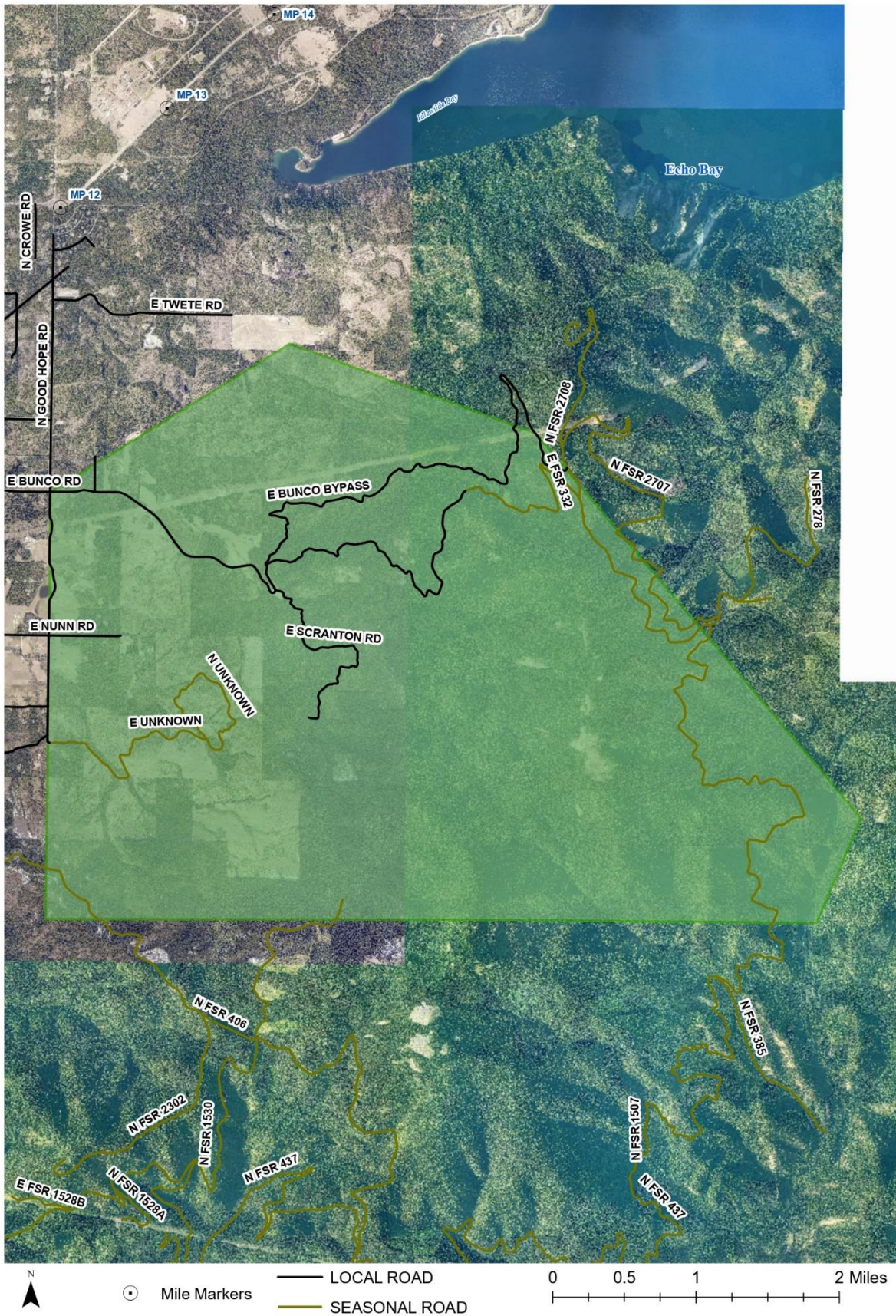




# Ridge Creek Fire - Bunco

Kootenai County  
August 8th, 2023

Level 1: Get Ready



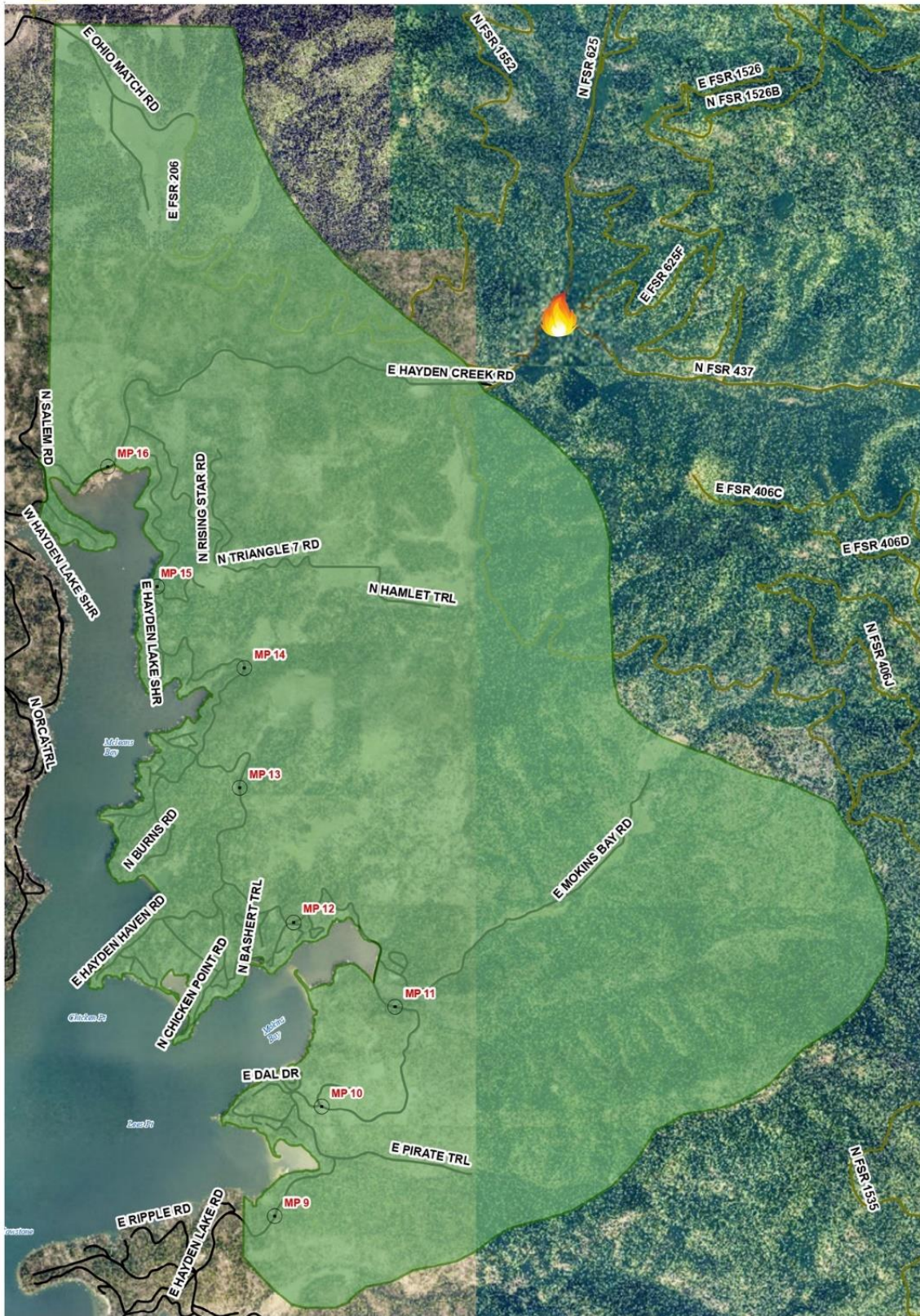




# Ridge Creek Fire

Level 1: Get Ready

Kootenai County  
August 4th, 2023



○ Mile Markers  
— LOCAL ROAD  
— SEASONAL ROAD

0 0.25 0.5 1 Miles





## Idaho Panhandle National Forests



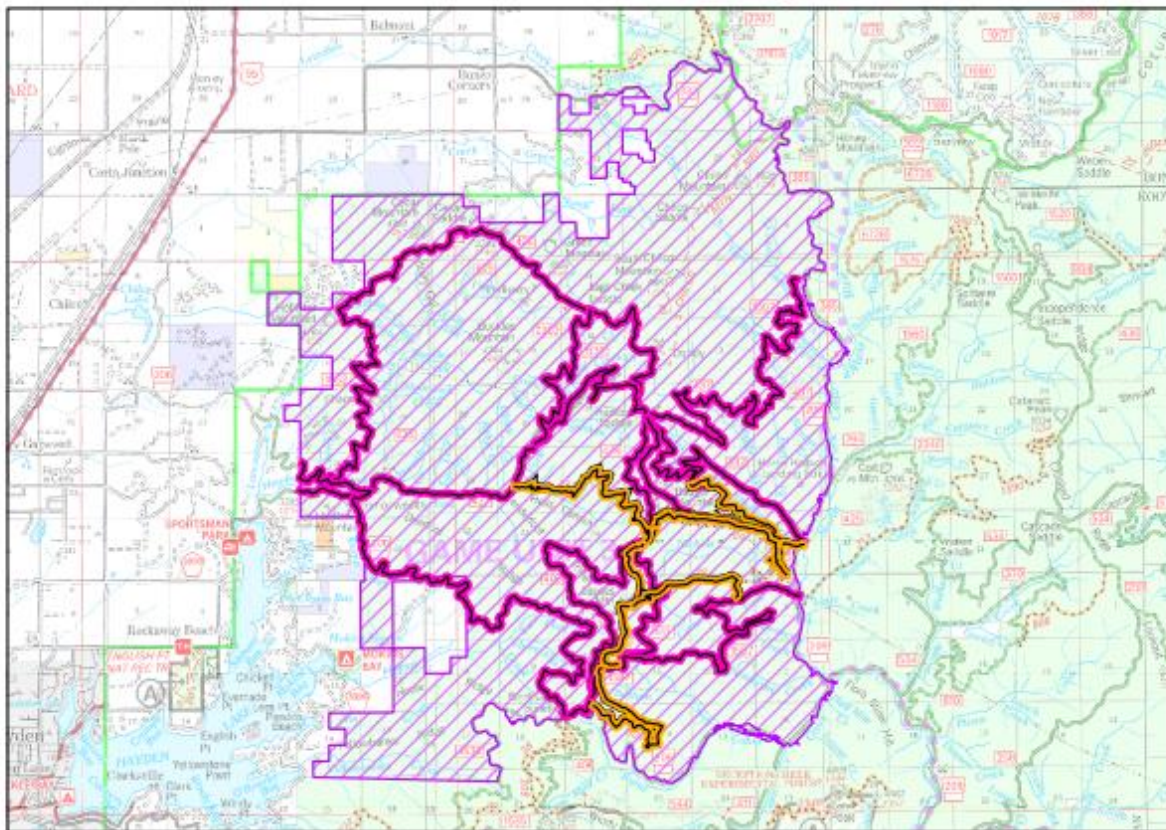
Forest Closure: Ridge Creek Fire Closure

Order Number: 01-04-03-23-002

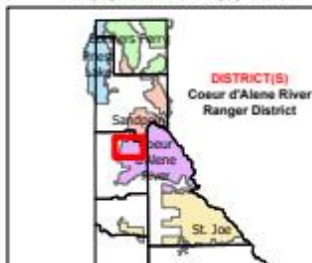
Effective Date : AUGUST 4th, 2023

Rescind Date : SEPTEMBER 30th, 2023

### Exhibit A



#### IDAHO KOOTENAI COUNTY



#### Closed Road Numbers:

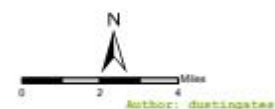
-206  
-392  
-406  
-428A  
-437  
-1511  
-1530  
-1552  
-1587

#### Closed Trail Numbers:

-69  
-78  
-234  
-802

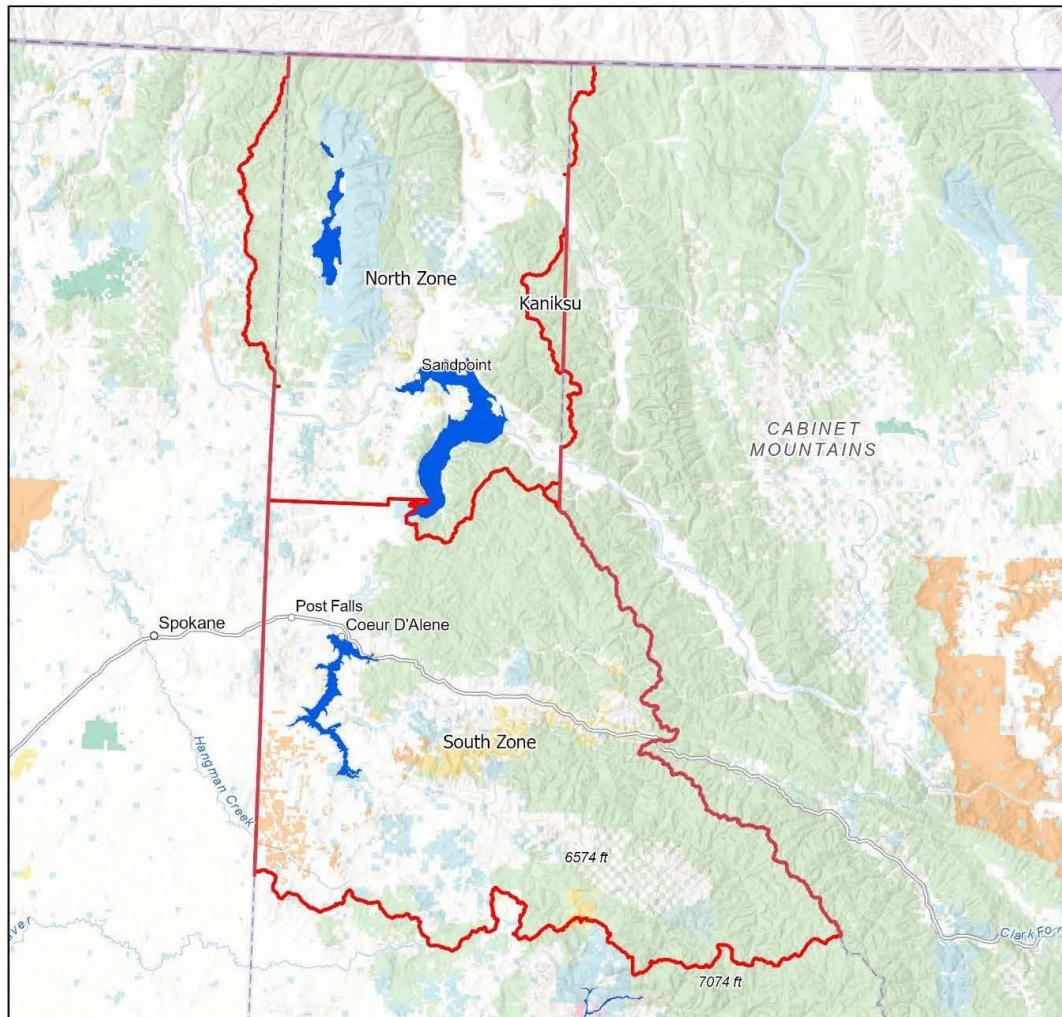
#### Closures

- Road
- Trail
- Area



# Coeur d'Alene

## Fire Restriction Areas



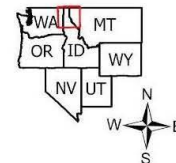
Date Created:  
05/18/2022

The surface management status should be used as a general guide only. Official lands records at the Bureau of Land Management (BLM) and other State and County offices should be checked for up-to-date information regarding any specific tract of lands.

No warranty is made by the Idaho Department of Lands (IDL) as to the accuracy, reliability, or completeness of these datasets for individual use or aggregation with other datasets.

Spatial Reference  
Name: WGS 1984 Web Mercator Auxiliary Sphere

0 5 10 20 30 40 Miles





# FIRE RESTRICTIONS



STAGE II RESTRICTIONS are in effect and **prohibit** the following:



## FIRES OR CHARCOAL

**Prohibited:** Building, maintaining, attending or using a fire, campfire, or stove fire.

**Exceptions:** Persons using a fire or stove fire fueled solely by liquid petroleum or LPG fuels. Such devices, including propane campfires, may be used only in an area **clear of flammable material**.



## SMOKING

**Prohibited:** Smoking outside an enclosed vehicle or building.

**Exceptions:** You can smoke while stopped in an area at least 3 feet in diameter that is barren or **cleared of all flammable materials**.



## Cross Country Travel

**Prohibited:** Operating motorized vehicles off designated roads and trails.



## Chainsaws/Other Equipment

**Prohibited:** The following acts are prohibited from 1:00 p.m. to 1:00 a.m. - Operating a chainsaw or other equipment powered by an internal combustion engine; blasting, welding, or other activities that generate flame or flammable material; or using an explosive.

**Remember – Fireworks are illegal on federal public lands.**



For more information contact your local fire agency